

000.620 PD - 008 - BILL OF MATERIALS 4 LITE

ITEM NO.	DESCRIPTION	QUANTITY	PART NO.	FAB DWG. NO	SOURCE
1	FXD PNL TOP RAIL	2	10001102	10001102-F-01	A
2	STILE	4	10001102	10001102-F-01	A
3	BOTTOM RAIL	2	10001102	10001102-F-02	A
4	INTERLOCK	2	10001117	10001117-F-04	A
5	SCREW COVER	2	10001118	STRAIGHT CUT	A
6	GLAZING BEAD	8	10001111	10001111-F-01	A
7	STILE REINFORCEMENT - JAMB	2	10300150	STRAIGHT CUT	PPP
8	STILE REINFORCEMENT - INTERLOCK	2	10300151	STRAIGHT CUT	PPP
9	WEATHER-STRIPPING - 270 x 250	AS REQD	W21255MW		HHHH
10	OPR PNL				
11	RAIL - TOP	2	10001102	10001102-F-01	A
12	STILE - INTERLOCK	2	10001102	10001102-F-03	A
13	STILE - ACTIVE LOCK	1	10001102	10001102-F-10	A
14	STILE - PASSIVE LOCK	1	10001102	10001102-F-16	A
15	RAIL - BOTTOM	2	10001102	10001102-F-05	A
16	4 LITE ASTRAGAL	1	10001116	10001116-F-01	A
17	INTERLOCK	2	10001117	10001117-F-02	A
18	SCREW COVER	2	10001118	STRAIGHT CUT	A
19	GLAZING BEAD	8	10001111	10001111-F-01	A
20	STILE REINFORCEMENT - INTERLOCK	2	10300151	STRAIGHT CUT	PPP
21	STILE REINFORCEMENT - ACTIVE LOCK	2	10300151	STRAIGHT CUT	PPP
22	STILE REINFORCEMENT - PASSIVE LOCK	1	10300150	10300150-F-01	PPP
23	RAIL REINFORCEMENT - BOTTOM	1	10300151	10300151-F-01	PPP
24	WEATHER-STRIPPING - 270 x 250	2	10300152	10300152-F-01	PPP
25	MISC	AS REQD	W21255MW		HHHH
26	LOCK SET ASSEMBLY - 2817 LOCK W/ TRIMPLATE	1	DECU-XXX4		F
27	HANDLE SET ASSEMBLY	2	DECU-XXX1		F
28	HANDLE SET - INTERIOR SWITCH		DECU-XXX2		
29	HANDLE SET - INTERIOR SWITCH / KEY		DECU-XXX3		
30	HANDLE SET - BLANK		1988PRS166REVSS		F
31	ROLLER ASSEMBLY - PRECISION 1.98" WHEEL	4	D6096AMWKC 0.810		HHHH
32	DRAFT PLUG - .810 DIA.	4	9946		D
33	3/8" HOLE PLUG	4	DECU-2808-84		F
34	KEEPER - 2778 KEEPER - STAINLESS STEEL	1	01114055-D		MMMMM
35	IMPACT BRACKET	5			
36	1" INSULATED GLASS - NOTE	4	REFER TO APPLICABLE TEST REPORT		
37	SETTING BLOCKS (REFER TO IS SUPPLIER QUOTATION)	AS REQD	REFER TO APPLICABLE TEST REPORT		
38	GLAZING COMPOUND	AS REQD	REFER TO APPLICABLE TEST REPORT		
39	SCREWS	AS REQD			
40	LOCK SET	4	#10 x 1.25" PFH - 410SS		
41	ROLLER ASSEMBLY	8	#8 x 3/4" PPH - 410SS		
42	REINFORCEMENT TO PANEL	AS REQD	#8 x 1" PFH - 410SS		
43	INTERLOCK	AS REQD	#8 x 5/8" PPH - 410SS		
44	4 LITE ASTRAGAL	AS REQD	#8 x 2" PPH - PAINTED		
45	KEEPER	4	#8 x 3" PPH - 410SS		
46	IMPACT BRACKET	15	#8 x 2.5" PFH - PAINTED		
47					

ELEMENT MATERIALS TECHNOLOGY
 1924 Premier Row
 Orlando, FL 32809

NOTE LAMINATED GLASS UTILIZES .080" SOLUTIA PVB

REV	DATE	DESCRIPTION	BY

CONFIDENTIAL
 UNPUBLISHED WORK © 2010
 DECEUNINCK NORTH AMERICA

Verified By: *[Signature]*
 Date Verified: *4/22/12*

ESP NO. *ESP009160P/S*

MONROE, OH COPYRIGT 2010
 NAME: 000.620 PD - 008
 DWN BY: JGM
 CHG BY:
 DWG NO: 000620PD-008

THIS DOCUMENT CONTAINS PROPRIETARY AND CONFIDENTIAL INFORMATION. DO NOT COPY OR DISCLOSE THIS INFORMATION WITHOUT THE EXPRESS WRITTEN CONSENT OF DECEUNINCK NORTH AMERICA. DECEUNINCK NORTH AMERICA RESERVES THE RIGHT TO CHANGE THIS DRAWING AND ANY ASSOCIATED DOCUMENTS.

0-5

623.000 PD - 004 - BILL OF MATERIALS 3 & 4 LITE


ITEM NO.	DESCRIPTION	QUANTITY	PART NO.	FAB DWG. NO	SOURCE
1	HEAD	1	10001100	10001100-F-01	A
2	JAMB	2	10001100	10001100-F-05	A
3	EXTERIOR FRAME COVER	2	10001104	10001104-F-01	A
4	INTERIOR FRAME COVER	4	10001104	STRAIGHT CUT	A
5	SILL	1	10001101	10001101-F-01	A
6	SILL THRESHOLD	1	10300171	10300171-F-01	PPPP
7	SILL RISER	2	10001105	10001105-F-01	A
8	WEATHER-STRIPPING - 270 x .250	AS REQ'D	W21255MW		HHHH
9					
10	MISC	6	10300148	10300148-F-01	PPPP
11	ROLLER TRACK CAP	1	1A16719	STRAIGHT CUT	N
12	L - BRACKET	4	011H027		LLLL
13	SILL FRAME GASKET	2	G-A302-Z1-G600		CC
14	FRAME REINFORCEMENT	4	10300149	STRAIGHT CUT	PPPP
15	KEEPER	1			F
16	2778 KEEPER - YZD MILD STEEL				
17	2778 KEEPER - STAINLESS STEEL		DECU-2808-00		DDDD
18	T - BRACKET	1 OR 2	DECU-2808-84		MMMM
19	SCREEN KEEPER	1	10300213		
20	BUMPER STOP	2 OR 4	011H040		
21			2152.525		
22	SCREWS	36	#8 x 1.25" PFH - 410SS		
23	L - BRACKET - SASH	8	#8 x 1" PFH - 410SS		
24	L - BRACKET - HEAD	8	#8 x 0.75" PFH - 410SS		
25	L - BRACKET - HEAD	8	#8 x 2.5" PFH - 410SS		
26	SILL RISER	4	#8 x 1.25" PFH - 410SS		
27	FRAME ASSEMBLY	12	#8 x 2.5" PPH - 410SS		
28	SCREEN KEEPER	2	#6 x .375" PPH		
29	T - BRACKET	8 OR 16	#8 x 2.5" PFH - 410SS		
30					
31					

ELEMENT MATERIALS TECHNOLOGY

1924 Premier Row
Orlando, FL 32809

ESP009160P-5
Date Verified: 4/26/12
Verified By: _____

CONFIDENTIAL
UNPUBLISHED WORK © 2010
DECEUNINCK NORTH AMERICA

	
MONROE, OH	COPYRIGHT 2010
NAME: 623.000 PD - 004	
DWN BY: JGM	
CHKD BY:	
DWG NO: 623000PD-004	

THIS DOCUMENT CONTAINS PROPRIETARY AND CONFIDENTIAL INFORMATION. DO NOT COPY OR DISCLOSE THIS INFORMATION WITHOUT THE EXPRESS WRITTEN CONSENT OF DECEUNINCK NORTH AMERICA. DECEUNINCK NORTH AMERICA RESERVES THE RIGHT TO CHANGE THIS DRAWING AND ANY ASSOCIATED DOCUMENTS.

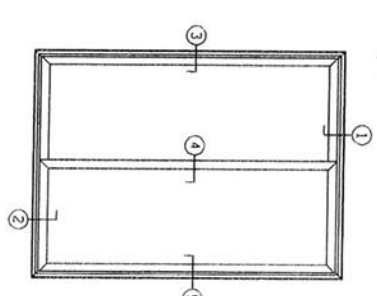
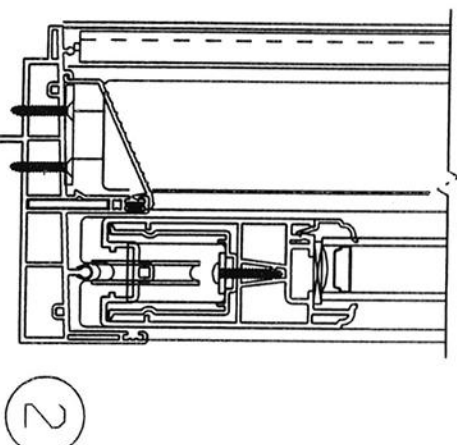
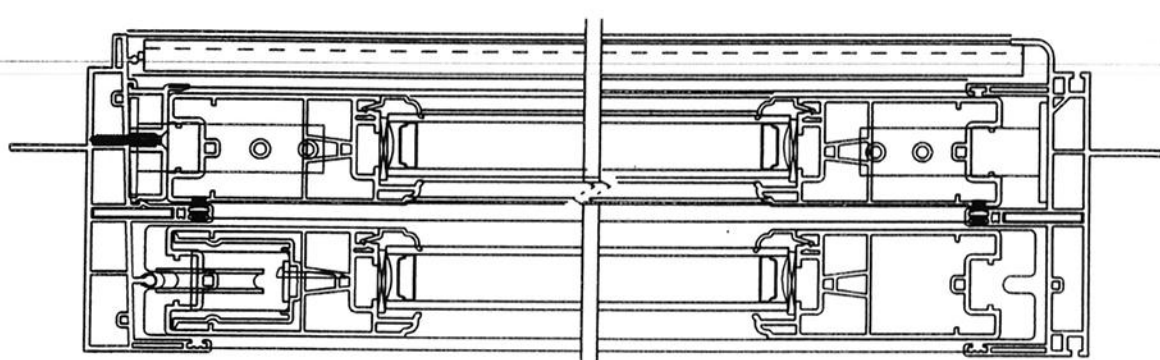
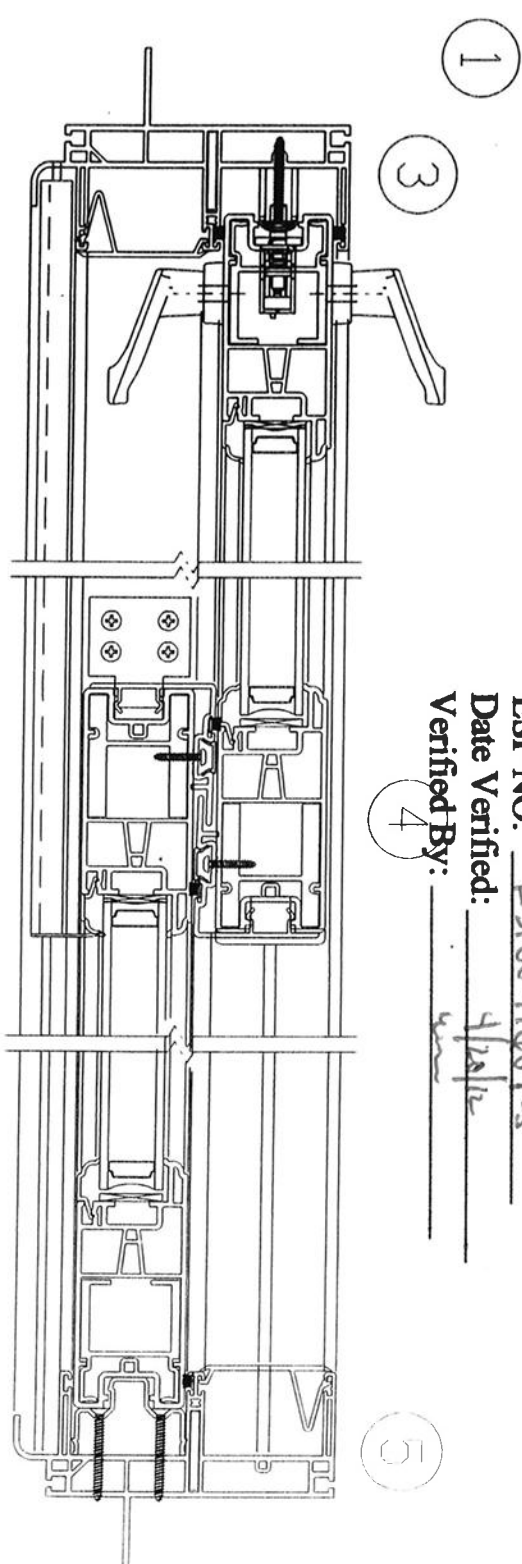
OLD PATENTED. CHANGES SHALL BE
INCORPORATED BY THE DESIGN ACTIVITY.

ELEMENT MATERIALS TECHNOLOGY
1924 Premier Row
Orlando, FL 32809

ESP NO. ESP0091100 P-5

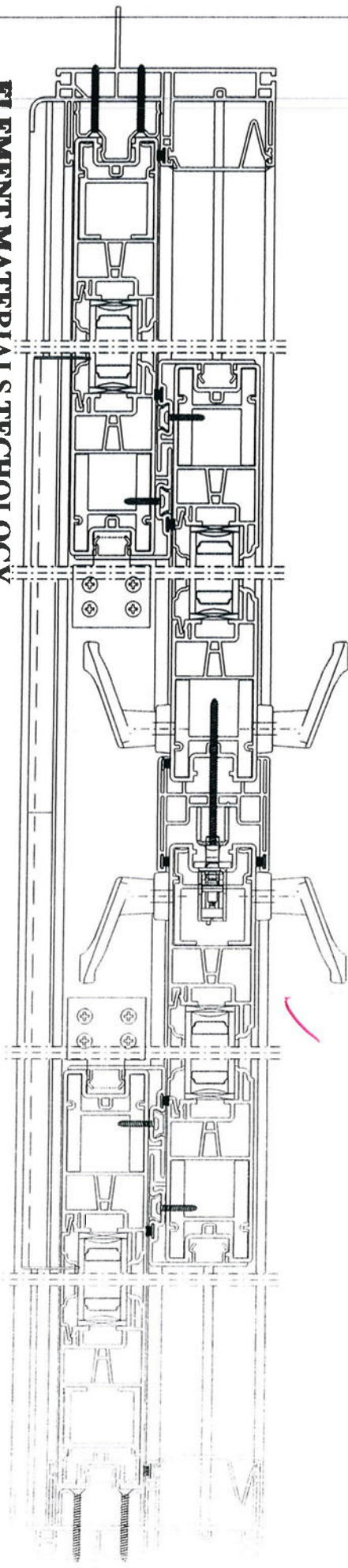
Date Verified: 4/24/02

Verified By: [Signature]



CONFIDENTIAL	
<small> THE INFORMATION CONTAINED HEREIN IS UNCLASSIFIED EXCEPT WHERE SHOWN OTHERWISE. IT IS THE PROPERTY OF ELEMENT MATERIALS TECHNOLOGY AND IS LOANED TO YOUR COMPANY FOR YOUR COMPANY'S USE ONLY. IT IS NOT TO BE REPRODUCED, COPIED, OR DISCLOSED TO ANY OTHER PARTY WITHOUT THE WRITTEN PERMISSION OF ELEMENT MATERIALS TECHNOLOGY. </small>	
DATE: 04/24/02 TIME: 10:00 AM BY: [Signature] TITLE: [Signature]	PROJECT NO.: DRAWING NO.: SHEET NO.: TOTAL SHEETS:
PROJECT NO.: DRAWING NO.: SHEET NO.: TOTAL SHEETS:	DATE: 04/24/02 TIME: 10:00 AM BY: [Signature] TITLE: [Signature]
ELEMENT MATERIALS TECHNOLOGY 1924 PREMIER ROW ORLANDO, FL 32809 TEL: 407.821.5420 FAX: 407.821.5421 WWW: WWW.EMTECH.COM	

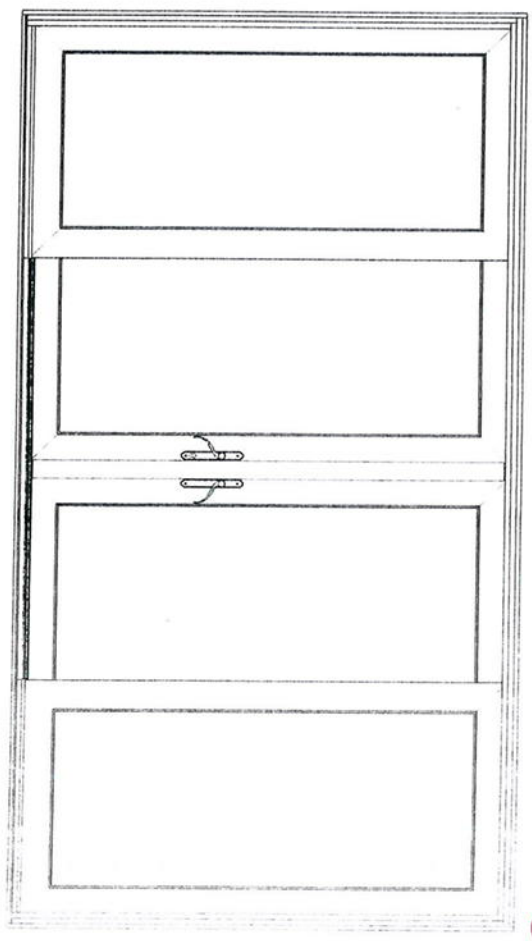
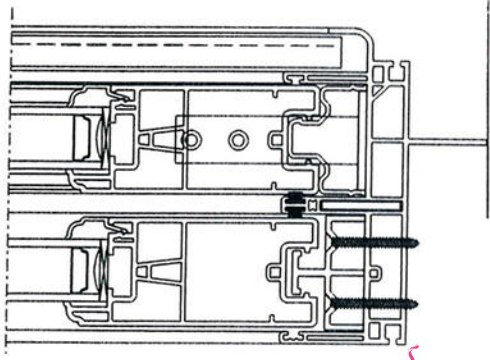
ALL UNFINISHED SURFACES SHALL BE
AS SHOWN BY THE DESIGN ARCHITECT.



ELEMENT MATERIALS TECHNOLOGY

1924 Premier Row
Orlando, FL 32809

ESP NO. ESP009160P-5
Date Verified: 4/24/12
Verified By: _____



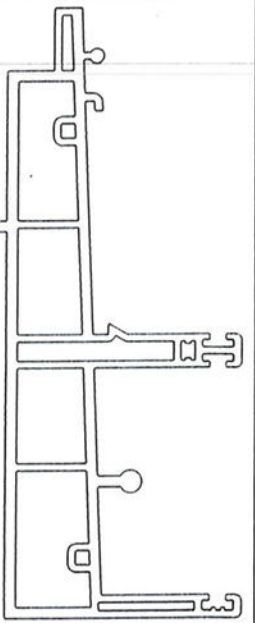
CONFIDENTIAL

UNCLASSIFIED UNDER E.O. 13526

DATE	4/24/12
BY	_____
REVISIONS	
NO.	DESCRIPTION
1	_____
2	_____
3	_____
4	_____
5	_____
6	_____
7	_____
8	_____
9	_____
10	_____

NOTES:
1. REFER TO DRAWING E22009-001 FOR VERTICAL GLASS SECTION (M.V.).

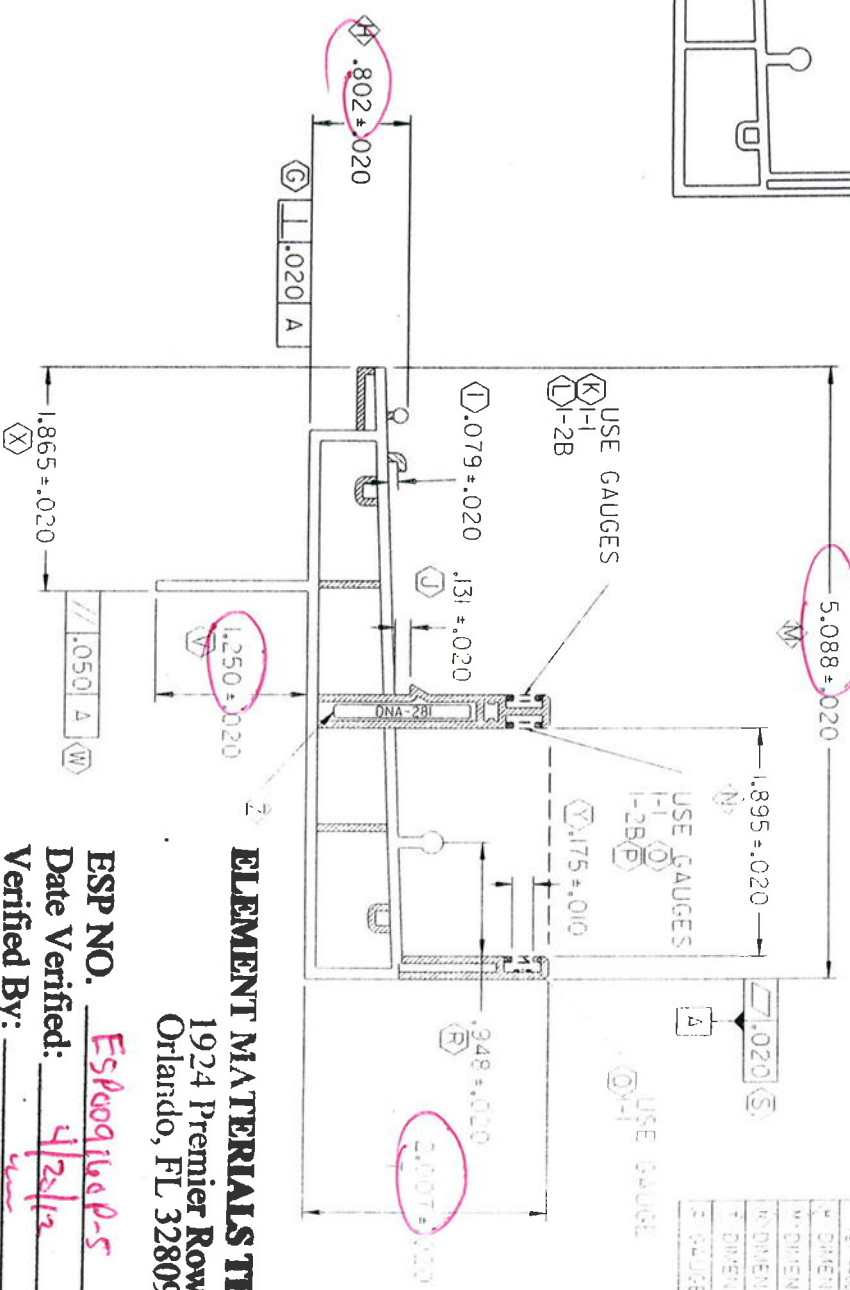
CAD MAINTAINED. CHANGES SHALL BE INCORPORATED BY THE DESIGN ACTIVITY.



WALL THICKNESS

.090 -	
.070 -	
.060 -	
.050 -	
.040 -	

- NOTES:
1. STD00013' STRAIGHTNESS CLASS A AND LENGTH TOLERANCES APPLY **(A)**
 2. INTERPRET ALL TOLERANCE APPLICATIONS PER STD00013 **(B)**
 3. UNSPECIFIED EXTERNAL RADI = .XXX +.010 / -.005 **(C)**
 4. UNSPECIFIED INTERNAL RADI = .XXX +.020 / -.005 **(D)**
 5. UNSPECIFIED EXTERNAL WALL THICKNESS = .XXX +/- .020 **(E)**
 6. UNSPECIFIED INTERNAL WALL THICKNESS = .XXX +/- .20% **(F)**



ELEMENT MATERIALS TECHNOLOGY
 1924 Premier Row
 Orlando, FL 32809

ESP NO. ESP0091600-5
 Date Verified: 4/28/12
 Verified By: [Signature]

CONFIDENTIAL
 UNPUBLISHED WORK © 2011
 DECEUNINCK NORTH AMERICA

THIS DOCUMENT CONTAINS PROPRIETARY AND CONFIDENTIAL INFORMATION. DO NOT COPY, REPRODUCE, OR DISCLOSE THIS INFORMATION WITHOUT THE EXPRESS WRITTEN CONSENT OF DECEUNINCK NORTH AMERICA. ANY UNAUTHORIZED CHANGE TO THIS DRAWING AND ANY ASSOCIATED DOCUMENTS.

UNLESS OTHERWISE SPECIFIED
 DIM. ARE IN INCHES
 2 PL. ± .000° 3 PL. ± .0005°
 INTERPRET DIM AND TOL PER
 ASME Y14.5M - 1994

THIRD ANGLE PROJECTION

DESIGN BY:	PJC
DATE:	02-07-20
DRAWN BY:	PJC
DATE:	02-07-20
APPROVED BY:	
DATE:	
FILE NAME:	06770.DGN

deceuninck
 NORTH AMERICA

251 NORTH DAVENPORT
 AVENUE
 ORLANDO, FL 32809

SCALE: 1:1

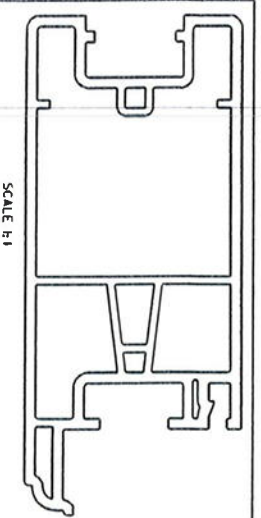
REVISION LIST

REV	DESCRIPTION	DATE
1	CHANGED DWTM & TO THE SIZE	02/07/20

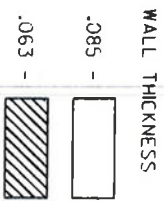
W. DIMENSION: 5.088 ± .020
 H. DIMENSION: 1.895 ± .020
 T. DIMENSION: .802 ± .020
 G. GAUGE DIM: 29

CAD MAINTAINED. CHANGES SHALL BE INCORPORATED BY THE DESIGN ACTIVITY.

ELEMENT MATERIALS TECHNOLOGY
 1924 Premier Row
 Orlando, FL 32809

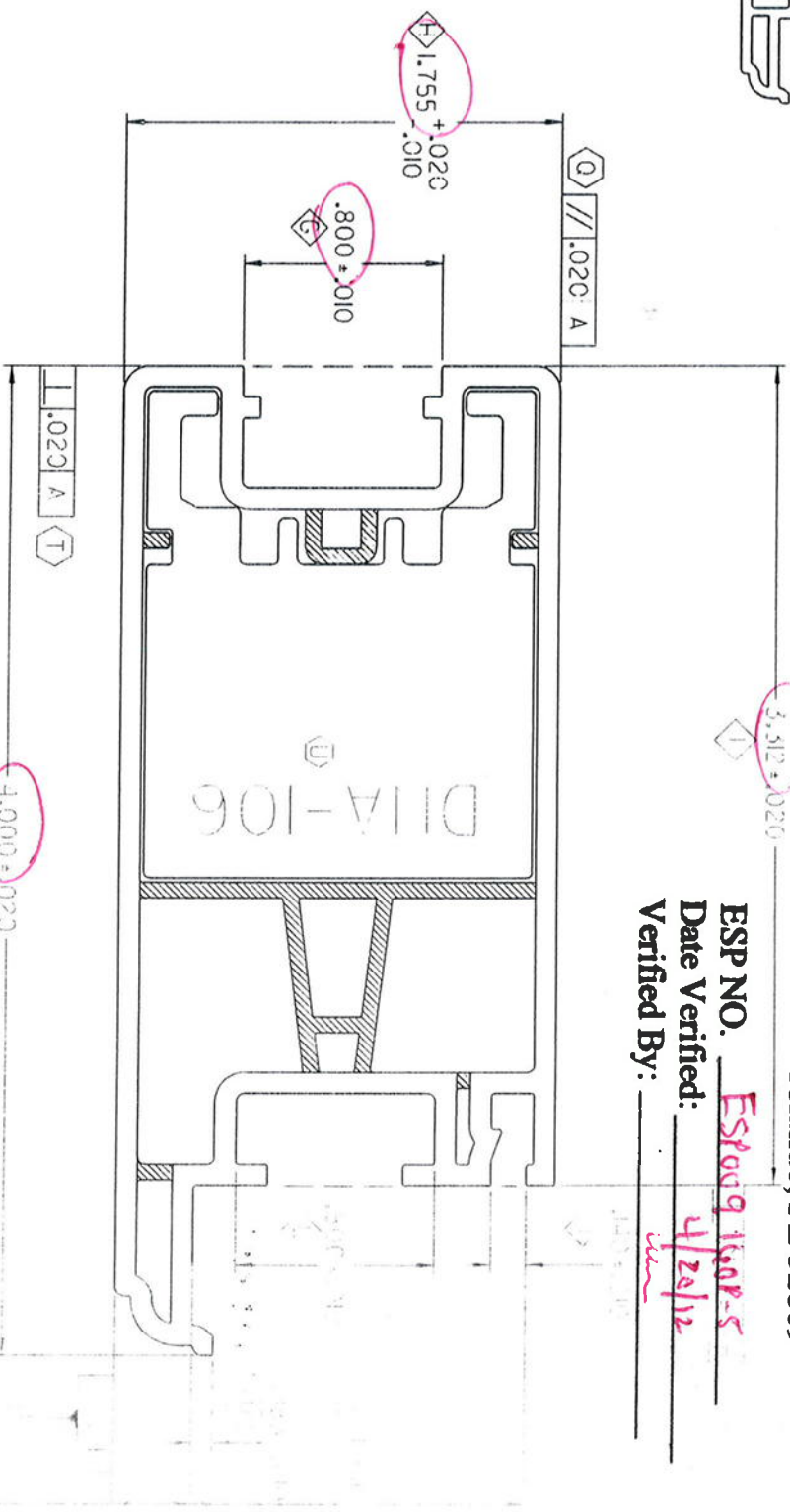


KEY PRODUCT CHARACTERISTICS	
G	DIMENSION .790 - .810
H	DIMENSION 1.745 - 1.775
I	DIMENSION 3.292 - 3.332
J	DIMENSION .130 - .150
L	DIMENSION .790 - .810



NOTES:

1. STD00003 STRAIGHTNESS CLASS B AND LENGTH TOLERANCES APPLY (A)
2. INTERPRET ALL TOLERANCE APPLICATIONS PER STD0003 (B)
3. UNSPECIFIED EXTERNAL RADII = .XXX +.010 / -.005 (C)
4. UNSPECIFIED INTERNAL RADII = .XXX +.020 / -.005 (D)
5. UNSPECIFIED EXTERNAL WALL THICKNESS = .XXX +/- .10% (E)
6. UNSPECIFIED INTERNAL WALL THICKNESS = .XXX +/- .20% (F)



ESP NO. ESP0091608-5
 Date Verified: 4/24/12
 Verified By: W

CONFIDENTIAL		UNPUBLISHED WORK © 2008 DECEUNINCK NORTH AMERICA	
THIS DOCUMENT CONTAINS PROPRIETARY AND CONFIDENTIAL INFORMATION. DO NOT COPY OR REPRODUCE IN ANY MANNER WITHOUT THE EXPRESS WRITTEN CONSENT OF DECEUNINCK NORTH AMERICA. DECEUNINCK NORTH AMERICA RESERVES THE RIGHT TO CHANGE THIS DRAWING AND ANY ASSOCIATED DOCUMENTS.		UNLESS OTHERWISE SPECIFIED: DIM ARE IN INCHES 2 PLACES DECIMALS TOLERANCES: FRACTIONS 45° AND 135° PER ASME Y14.5M - 1994	
DESIGN BY: <u>SR</u>		DATE: <u>04/06/12</u>	
DRAWN BY: <u>SR</u>		DATE: <u>04/06/12</u>	
CHECKED BY: <u>SR</u>		DATE: <u>04/06/12</u>	
APPROVED BY: <u>SR</u>		DATE: <u>04/06/12</u>	
TITLE: <u>WALL THICKNESS</u>		PART NO: <u>1924-106</u>	
DRAWING NO: <u>1924-106</u>		REV: <u>B</u>	



SCALE 1:1

CAD MAINTAINED, CHANGES SHALL BE
 PROPERLY NOTED IN THE DESIGN HISTORY
ELEMENT MATERIALS TECHNOLOGY

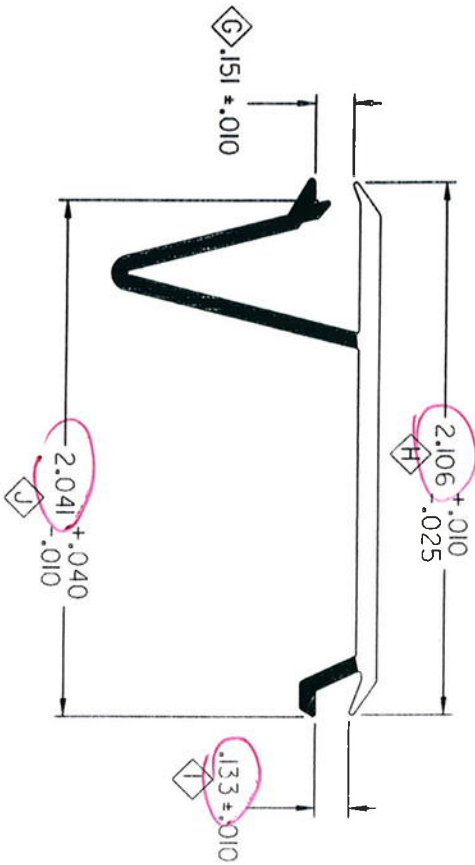
1924 Premier Row
 Orlando, FL 32809

ESP NO. ESP00911000-5
 Date Verified: 4/26/12
 Verified By: _____

REV	DESCRIPTION	DATE	APPROVER
0	KAC	10/08/25	EMR

KEY PRODUCT CHARACTERISTICS

G	DIMENSION: 1d1 - .151
H	DIMENSION: 2.091 - 2.116
I	DIMENSION: .123 - .147
J	DIMENSION: 2.031 - 2.081



WALL THICKNESS

.080 -

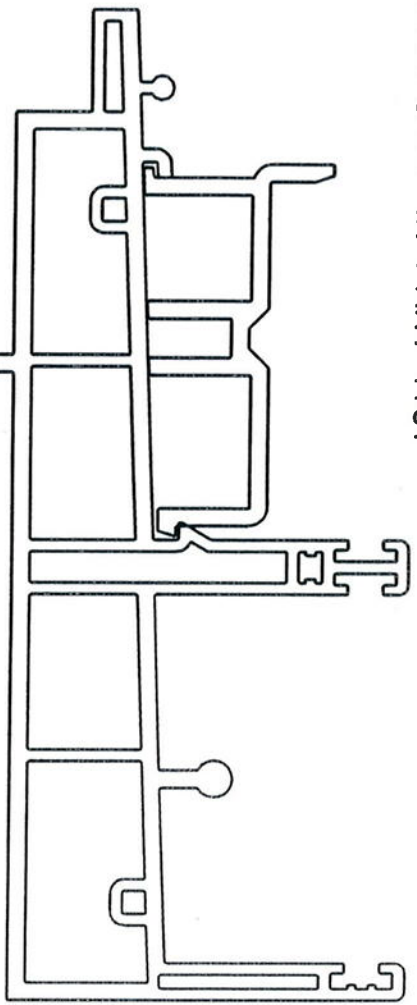
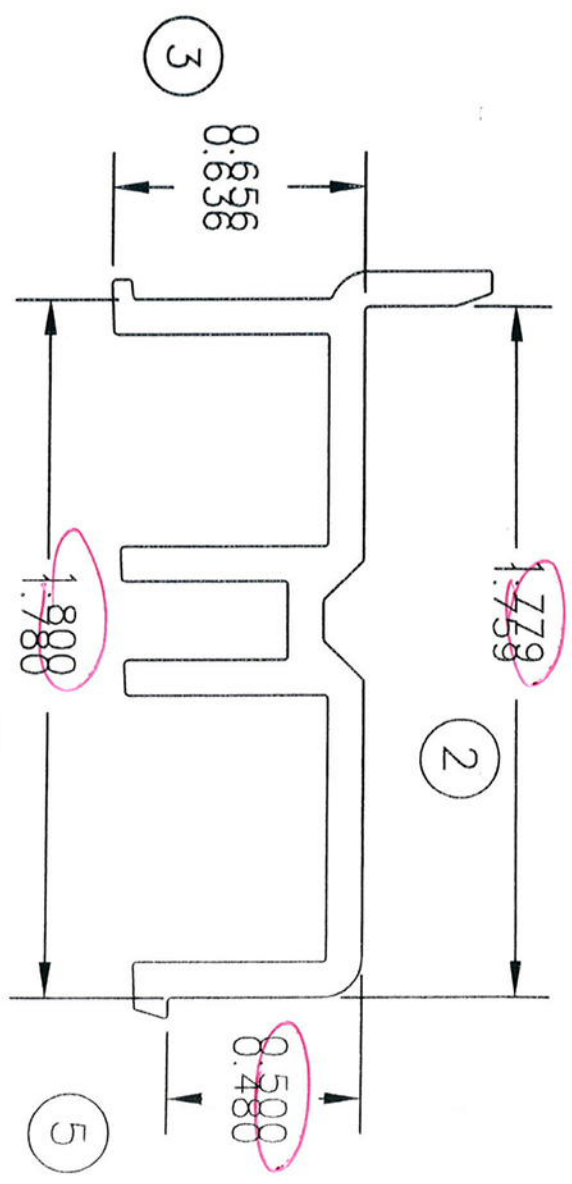
.060 -

NOTES:

1. STANDARD STRAIGHTNESS CLASS E AND LENGTH TOLERANCES APPLY (A)
2. INTERPRET ALL TOLERANCE APPLICATIONS PER STD00013 (B)
3. UNSPECIFIED EXTERNAL RADII = .xxx ± .020 / -.005 (D)
4. UNSPECIFIED INTERNAL RADII = .xxx ± .020 / -.005 (D)
5. UNSPECIFIED EXTERNAL WALL THICKNESS = .xxx ± .20% (E)
6. UNSPECIFIED INTERNAL WALL THICKNESS = .xxx ± .20% (E)

CONFIDENTIAL		UNLESS OTHERWISE SPECIFIED DIM ARE IN INCHES	
UNPUBLISHED WORK © 2010 DECEUNINCK NORTH AMERICA		2 PL: ± 0.010° 3 PL: ± 0.005° INTERPRET DIM AND TOL PER ASME Y14.5M - 1994	
THIS DOCUMENT CONTAINS PROPRIETARY AND CONFIDENTIAL INFORMATION. DO NOT COPY OR DISCLOSE THIS INFORMATION WITHOUT THE EXPRESS WRITTEN CONSENT OF DECEUNINCK NORTH AMERICA. DECEUNINCK NORTH AMERICA RESERVES THE RIGHT TO CHANGE THIS DRAWING AND ANY ASSOCIATED DOCUMENTS.		THIRD ANGLE PROJECTION 	
DESIGN BY:	CTC	DATE:	05/11/14
DRAWN BY:	CTC	DATE:	05/11/14
AUTH:		DATE:	
AUTH:		DATE:	
FILENAME:		SCALE:	2:1
deceuninck NORTH AMERICA		NAME: FRAME ADAPTOR	
		SIZE PWA: N03	
511 NORTH GREENWOOD MORFEE, OHIO 43089		100CH04_SH	
SHEET: 1 OF 1		SHEET: 1 OF 1	

- ① WALL THICKNESS 0.100
0.080
- ⑥ CHECK SNAP IN PART 1101



ELEMENT MATERIALS TECHNOLOG.
 1924 Premier Row
 Orlando, FL 32809

ESP NO. ESP009160P-C
 Date Verified: 4/29/12
 Verified By: [Signature]



Deceuninck® NORTH AMERICA/Oakland NJ

AREA= _____
 TOTAL WEIGHT= _____
 TOL: ± 0.010

FILENAME: _____
 path _____

BY	DATE	MATL	SCALE
CTC	11/14/05	PVC	2:1

REV	BY	APPVD	DATE	CHANGE

SILL INSERT

10001105_SH

CAD MAINTAINED. CHANGES SHALL BE INCORPORATED BY THE DESIGN ACTIVITY.

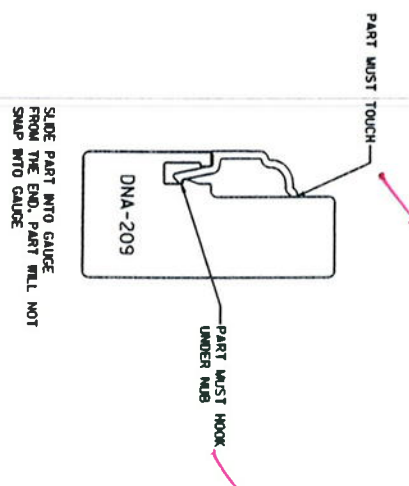
REV	DESCRIPTION	DATE	APPROVED
E	CHANGED MYLAR	01/14/09	GMD

KEY PRODUCT CHARACTERISTICS

G	GAUGE DNA-209
H	GAUGE DNA-209
I	GAUGE DNA-209
J	GAUGE DNA-209

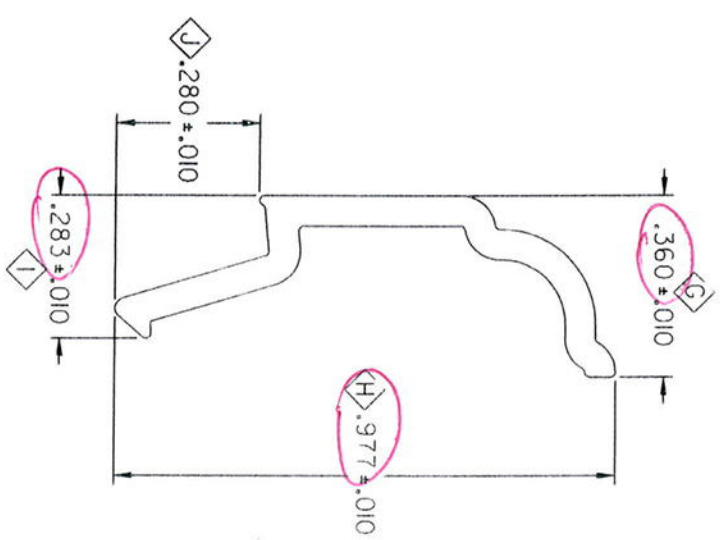


SCALE 1:1



SLIDE PART INTO GAUGE FROM THE END. PART WILL NOT SNAP INTO GAUGE

WALL THICKNESS
 .060 -



USE MYLAR 1000III, OP REV D

ELEMENT MATERIALS TECHNOLOGY
 1924 Premier Row
 Orlando, FL 32809

ESP NO. ESP0091100P-S
 Date Verified: 4/20/12
 Verified By: [Signature]

- NOTES
- STANDARD STRAIGHTNESS CLASS A AND LENGTH TOLERANCES APPLY
 - INTERPRET ALL TOLERANCE APPLICATIONS PER STANDARD
 - UNINSPECTED INTERNAL RADII = .xxx +.020 / -.005
 - UNINSPECTED INTERNAL WALL THICKNESS = .xxx +/- .02
 - UNINSPECTED INTERNAL WALL THICKNESS = .xxx +/- .02
 - UNINSPECTED INTERNAL WALL THICKNESS = .xxx +/- .02

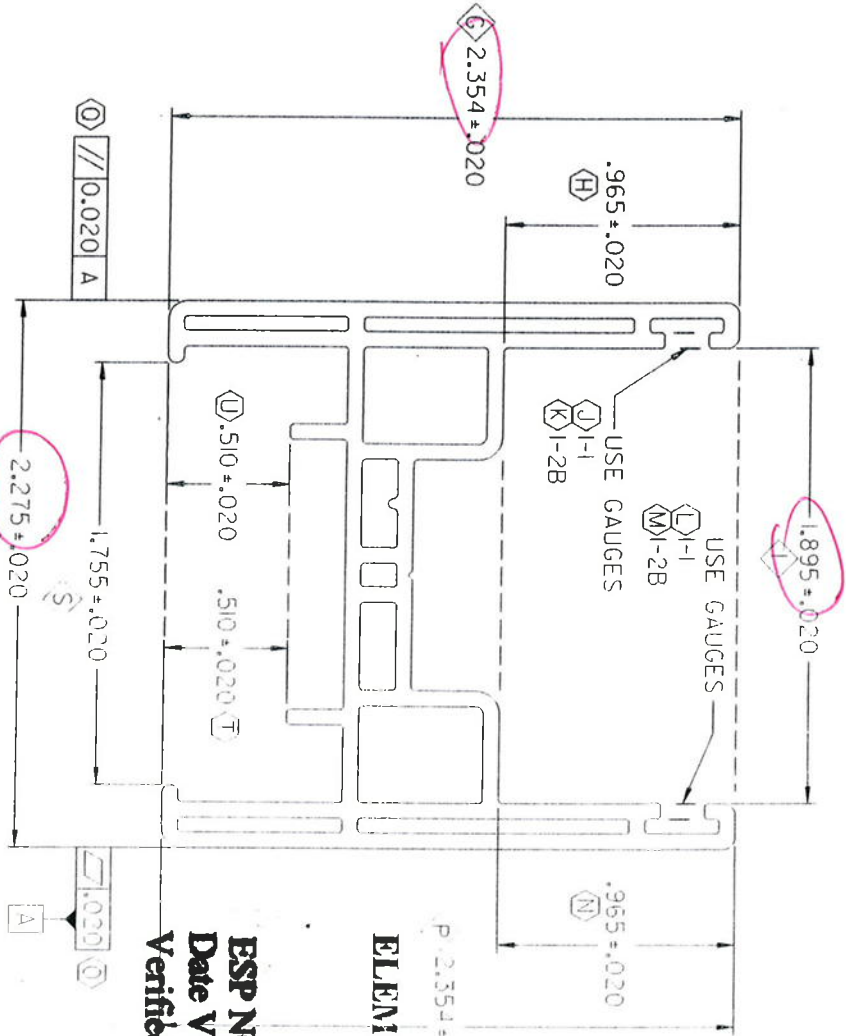
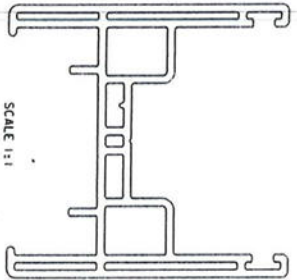
CONFIDENTIAL UNPUBLISHED WORK © 2010 DECEUNINCK NORTH AMERICA		UNLESS OTHERWISE SPECIFIED DIM ARE IN INCHES TOL. ON ANGLES: 1° 2 PL: ± 0.010° 3 PL: ± 0.005° INTERPRET DIM AND TOL. PER ASME Y14.5M - 1994		DESIGN BY: <u>MG</u>
THIS DOCUMENT CONTAINS PROPRIETARY AND CONFIDENTIAL INFORMATION. DO NOT COPY OR DISCLOSE THIS INFORMATION WITHOUT THE EXPRESS WRITTEN CONSENT OF DECEUNINCK NORTH AMERICA. DECEUNINCK NORTH AMERICA RESERVES THE RIGHT TO CHANGE THIS DRAWING AND ANY ASSOCIATED DOCUMENTS.		THIRD ANGLE PROJECTION		DATE: <u>00/12/01</u>
		DATE: <u>00/12/01</u>		DATE: <u>00/12/01</u>
		AUTH: <u>[Signature]</u>		DATE: <u>00/12/01</u>
		FILENAME: <u>10534d</u>		DATE: <u>00/12/01</u>
		SCALE: <u>4:1</u>		DATE: <u>00/12/01</u>
		SHEET: <u>049</u>		DATE: <u>00/12/01</u>
		SHEET: <u>049</u>		DATE: <u>00/12/01</u>

deceuninck
 NORTH AMERICA

GLAZING BEAD

31 NORTH AVENUE
 MONROE, LA 70002

CAD MAINTAINED. CHANGES SHALL BE INCORPORATED BY THE DESIGN ACTIVITY.



REV	DESCRIPTION	DATE	BY
1	ISSUE FOR MANUFACTURE	05/11/14	KPC
2	DESIGN CHANGES		
3	DESIGN CHANGES		
4	DESIGN CHANGES		
5	DESIGN CHANGES		

ELEMENT MATERIALS TECHNOLOGY
 1924 Premier Row
 Orlando, FL 32809

ESP NO. ESP0091600P-S
 Date Verified: 5/20/14
 Verified By: [Signature]

- NOTES:
1. 'STD00013' STRAIGHTNESS CLASS C AND LENGTH TOLERANCES APPLY (A)
 2. INTERPRET ALL TOLERANCE APPLICATIONS PER STD00013 (B)
 3. UNSPECIFIED EXTERNAL RADI = .XXX +.010 / -.005 (C)
 4. UNSPECIFIED INTERNAL RADI = .XXX +.020 / -.005 (D)
 5. UNSPECIFIED EXTERNAL WALL THICKNESS = .XXX +/- .10% (E)
 6. UNSPECIFIED INTERNAL WALL THICKNESS = .XXX +/- .20% (F)

CONFIDENTIAL
 UNPUBLISHED WORK © 2010
 DECEUNINCK NORTH AMERICA

THIS DOCUMENT CONTAINS PROPRIETARY AND CONFIDENTIAL INFORMATION. NO REPRODUCTION OR DISCLOSURE OF THIS INFORMATION TO ANY OTHER PARTY IS PERMITTED WITHOUT THE EXPRESS WRITTEN CONSENT OF DECEUNINCK NORTH AMERICA. DECEUNINCK NORTH AMERICA RESERVES THE RIGHT TO CHANGE THIS DRAWING AND ANY ASSOCIATED DOCUMENTS.

UNLESS OTHERWISE SPECIFIED
 DIM ARE IN INCHES
 TOL. ON ANGLES = 1°
 2 PL. SURF. 3 PL. ± 0.005"
 INTERPRET AS PER
 ASME Y14.5M - 1994

THIRD ANGLE PROJECTION

DESIGN BY:	DATE:
CJC	05/11/14
DRAWN BY:	DATE:
CJC	05/11/14
DATE:	DATE:
DATE:	DATE:
DATE:	DATE:

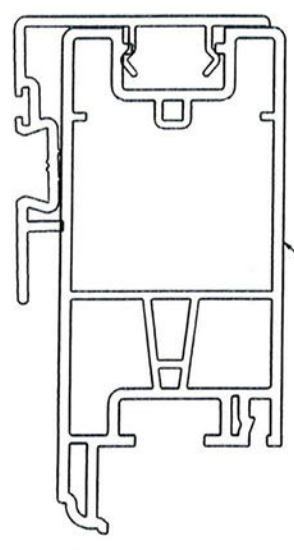
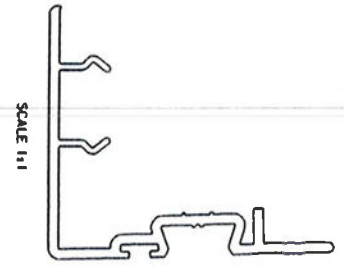
deceuninck
 NORTH AMERICA

3010000000000000
 1000000000000000

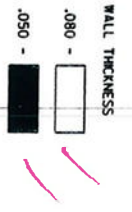
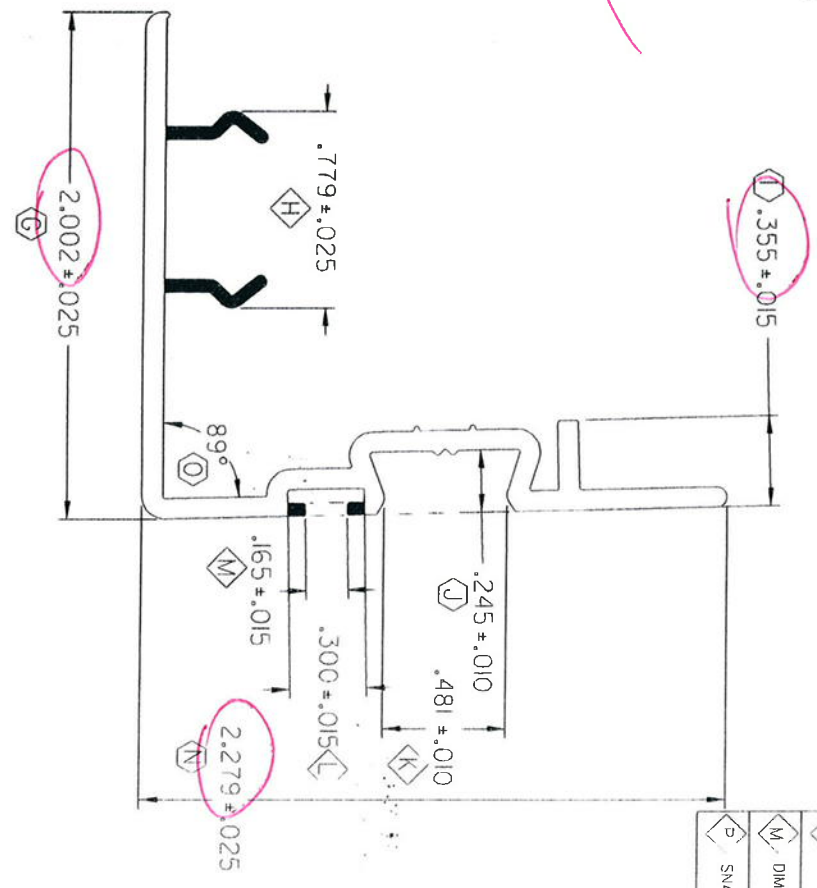
SCALE: 1:1

ELEMENT MATERIALS TECHNOLOGY
 1924 Premier Row
 Orlando, FL 32809

ESP NO. ESP009160P-S
 Date Verified: 4/26/12
 Verified By: [Signature]



CHECK SNAP CONDITION
 WITH PART 10001102 \diamond P



- NOTES:
- STANDARD STRAIGHTNESS CLASS A AND LENGTH TOLERANCES APPLY $\text{\textcircled{A}}$
 - INTERPRET ALL TOLERANCE APPLICATIONS PER ST00003 $\text{\textcircled{3}}$
 - UNSPECIFIED EXTERNAL RADII = .XXX +.000 / -.005 $\text{\textcircled{C}}$
 - UNSPECIFIED INTERNAL RADII = .XXX +.020 / -.005 $\text{\textcircled{D}}$
 - UNSPECIFIED EXTERNAL WALL THICKNESS = .XXX +/- .02 $\text{\textcircled{E}}$
 - UNSPECIFIED INTERNAL WALL THICKNESS = .XXX +/- .02 $\text{\textcircled{F}}$

CONFIDENTIAL		UNLESS OTHERWISE SPECIFIED DIM ARE IN INCHES TOL. ON ANGLES: $\pm 1^\circ$ INTERPRET DIM AND TOL PER ASME Y14.5M - 1994	
UNPUBLISHED WORK $\text{\textcircled{C}}$ 2010 DECEUNINCK NORTH AMERICA		THIRD ANGLE PROJECTION	
THIS DOCUMENT CONTAINS PROPRIETARY AND CONFIDENTIAL INFORMATION. DO NOT COPY OR DISCLOSE THIS INFORMATION WITHOUT THE EXPRESS WRITTEN CONSENT OF DECEUNINCK NORTH AMERICA. DECEUNINCK NORTH AMERICA HAS THE RIGHT TO CHANGE THIS DRAWING AND ANY ASSOCIATED DOCUMENTS.			
DESIGN BY: ROM		DATE: 06/12/22	
DRAWN BY: JGM		DATE: 07/01/02	
AUTH: _____		DATE: _____	
FILE NAME: _____		SCALE: 2:1	
FILE NAME: _____		SHEET: 1 OF 1	
deceuninck $\text{\textcircled{CP}}$ NORTH AMERICA		SASH ADAPTER	

REVISION HISTORY

REV	DESCRIPTION	DATE	APPROVED
E	KPC	10/08/27	SMR

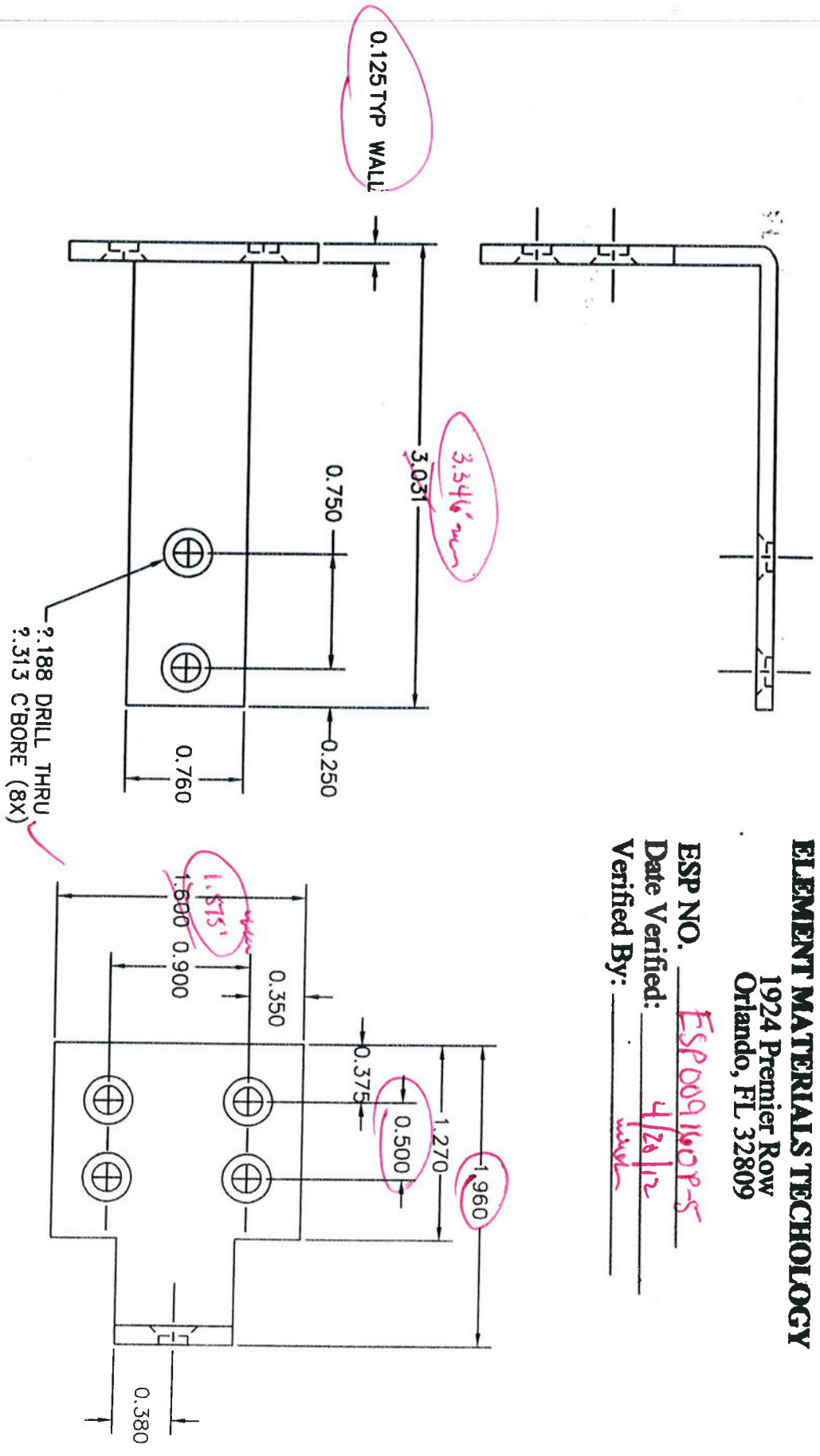
KEY PRODUCT CHARACTERISTICS

CHARACTERISTIC	VALUE
H	DIMENSION 75.6 - .804
K	DIMENSION .471 - .591
L	DIMENSION .285 - .315
M	DIMENSION .450 - .480
P	SNAP CONDITION

ELEMENT MATERIALS TECHNOLOGY

1924 Premier Row
Orlando, FL 32809

ESP NO. ESP009160P-R-5
Date Verified: 4/26/12
Verified By: WV

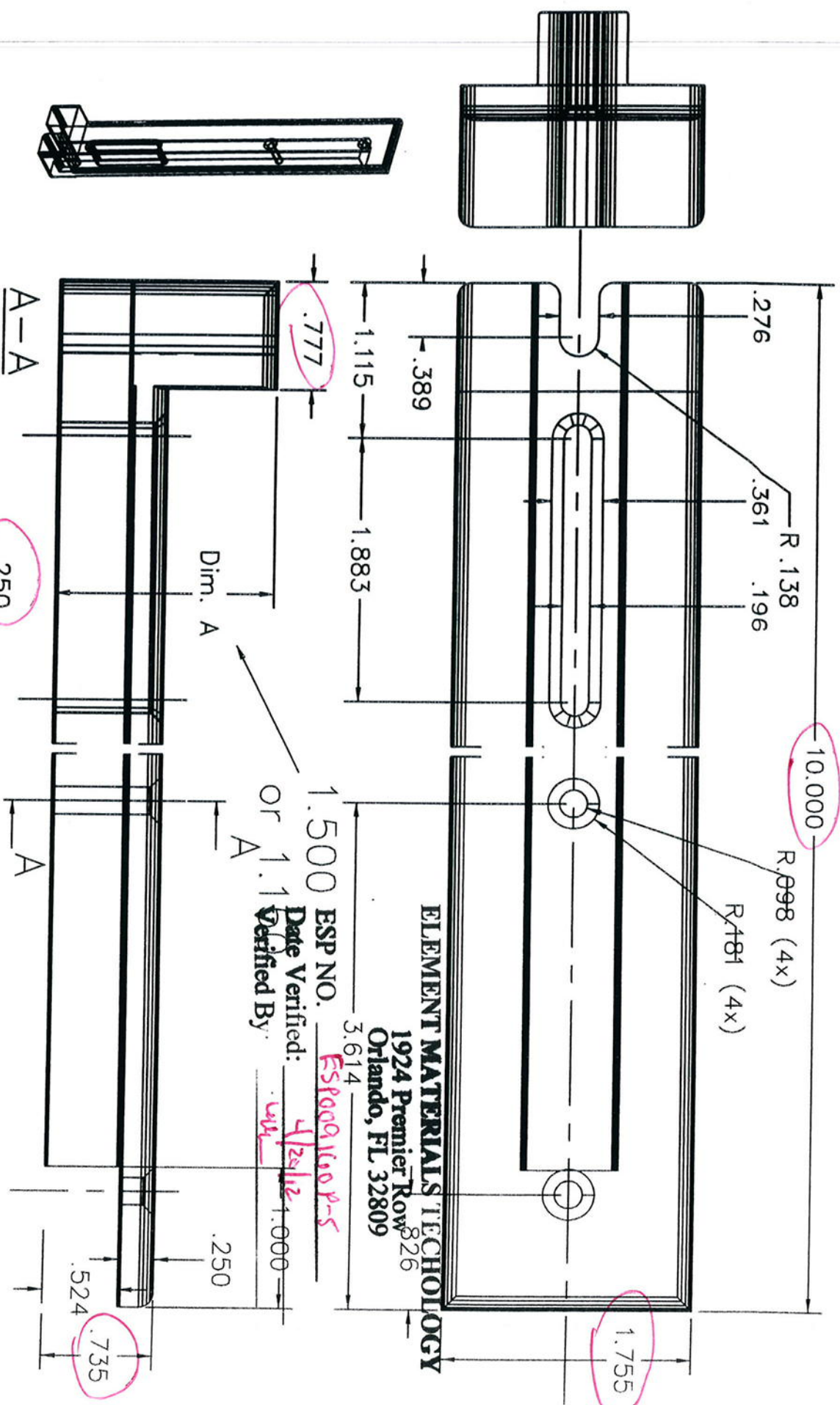


VINYL BUILDING PRODUCTS INC.

AREA =
WEIGHT =
TOLERANCES (EXCEPT AS NOTED)
±0.010

DRAWN	MG	DATE	10/29/01	APPV'D	MAT'L	6063-T6	SCALE	1/1
BRACKET				011H027				

REV	BY	APPV'D	DATE	CHANGE
-----	----	--------	------	--------



ELEMENT MATERIALS TECHNOLOGY
 1924 Premier Row⁸²⁶
 Orlando, FL 32809

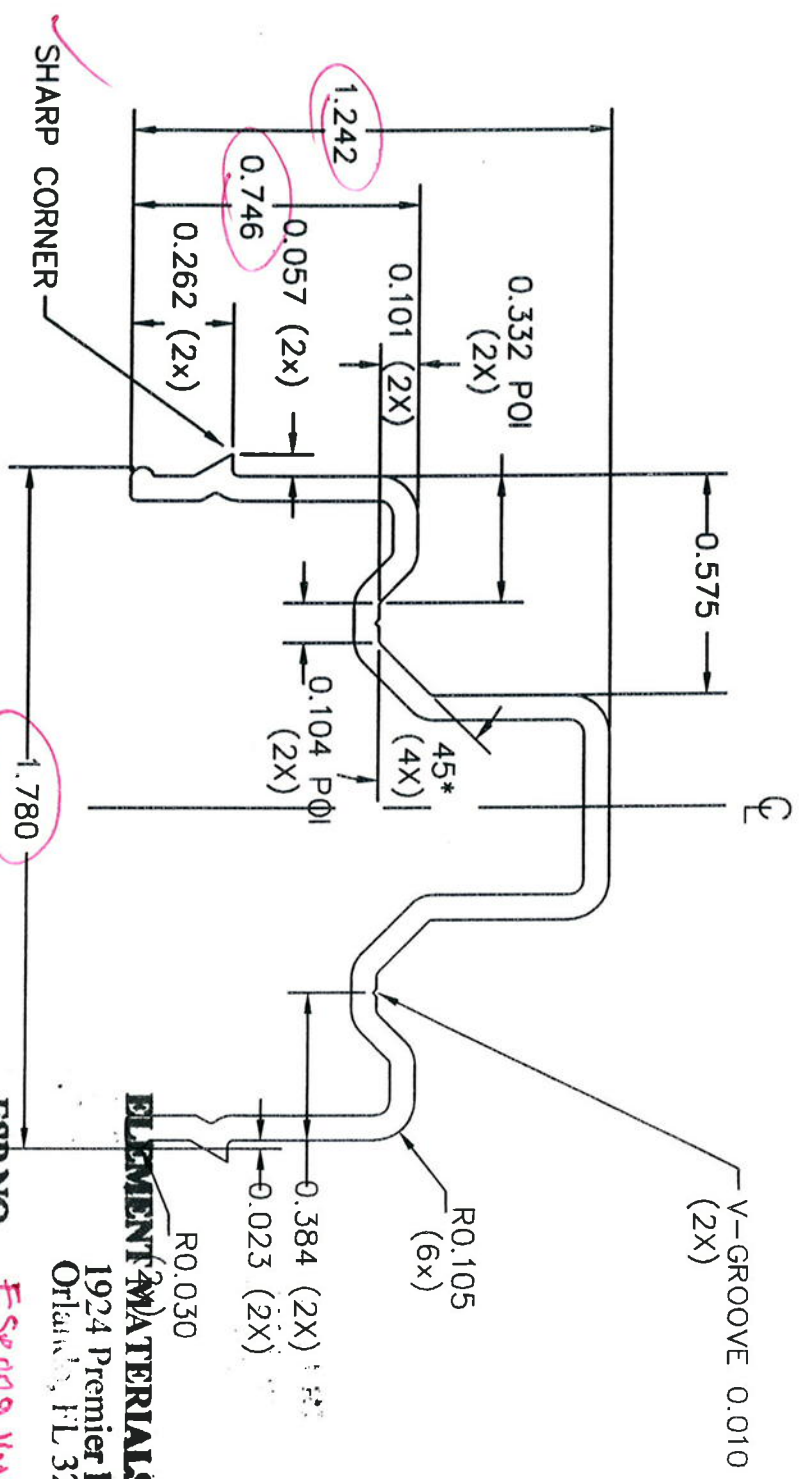
ESP NO. 1.500
 Date Verified: 4/24/12
 Verified By: wil
 or A

COLOR WHITE

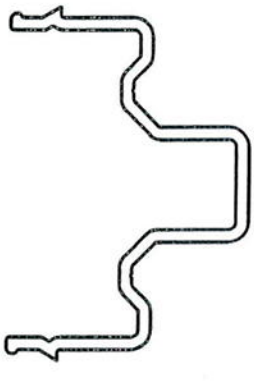
Vinyl Line®
 VINYL BUILDING PRODUCTS INC.
 AREA = 8.109 cub in
 WEIGHT =
 TOLERANCES (EXCEPT AS NOTED)
 ±0.010

REV	BY	APPVD	DATE	CHANGE

DRAWN	MG	DATE	APPVD	MATL	SCALE
		2/25/05		NYLON	1/1
BRACKET					
011h055-D					



ACTUAL SIZE
NO EXPOSED SURFACES



- NOTES:
1. ALL UNSPECIFIED RADII 0.015.
 2. ALCOA P/N 23111 (WHITE P-001, DESERT SAND P-029).

ESP NO. ESR009168P-5
 Date Verified: 4/26/12
 Verified By: [Signature]

ELEMENTAL MATERIALS TECHNOLOGY
 1924 Premier Row
 Orlando, FL 32809

Vinylina®

VINYL BUILDING PRODUCTS INC.

AREA = 0.269 sq in
 WEIGHT = 0.316 lb/ft

TOLERANCES (EXCEPT AS NOTED)
 ±0.010

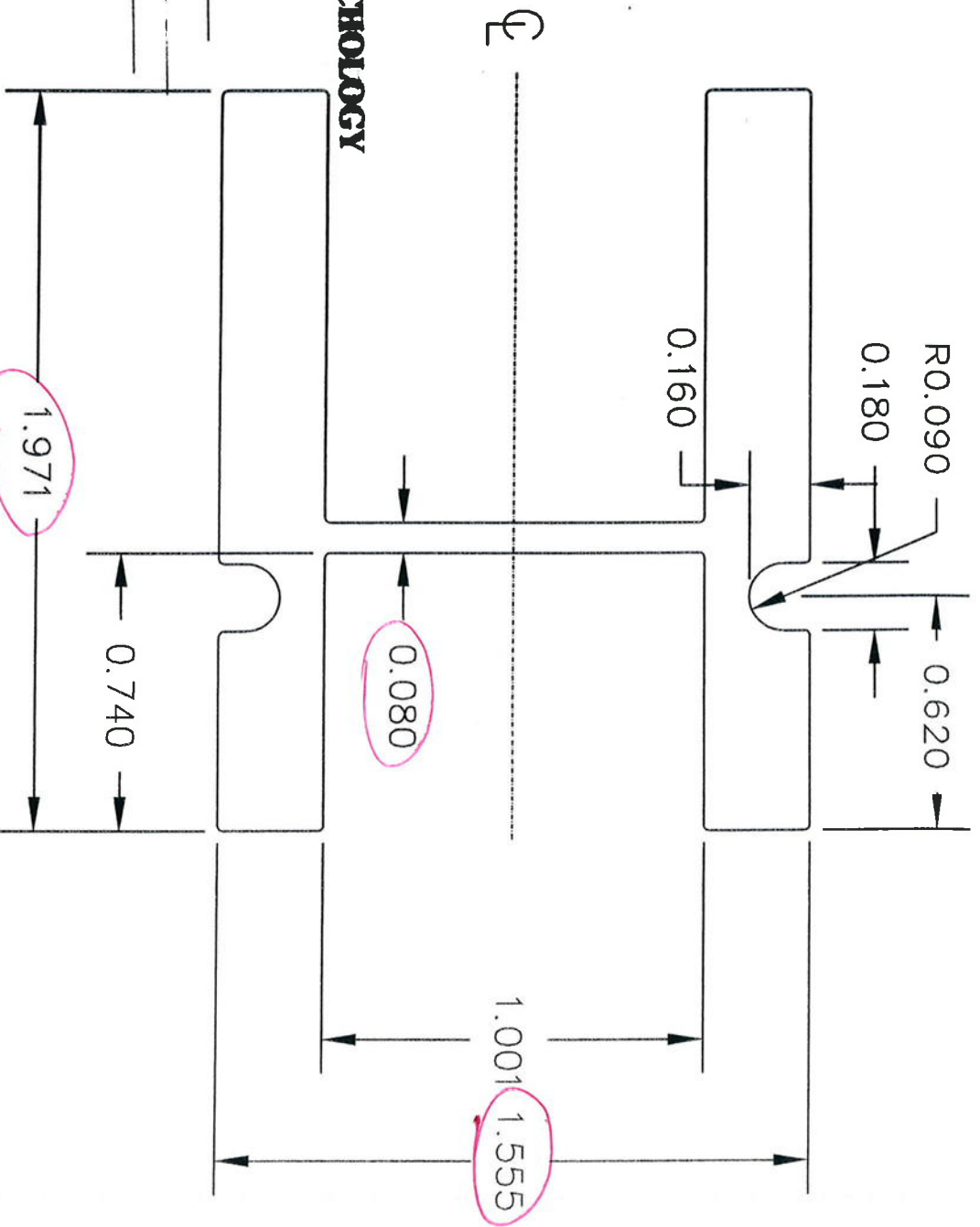
DRAWN	MG	DATE	APPVD	MAT#	SCALE
		10/28/3		8061-16.6105-15	2/1

SNUBBER

10300148

REV	BY	APPVD	DATE	CHANGE

NO EXPOSED SURFACES



ELEMENT MATERIALS TECHNOLOGY

1924 Premier Row
Orlando, FL 32809

ESP NO. ESD09160E-5
Date Verified: 2/20/12
Verified By: [Signature]

NOTES:
1. ALL UNSPECIFIED RADII ARE 0.015.



VINYL BUILDING PRODUCTS INC.

AREA = 1.121
WEIGHT = 1.316 lb/ft

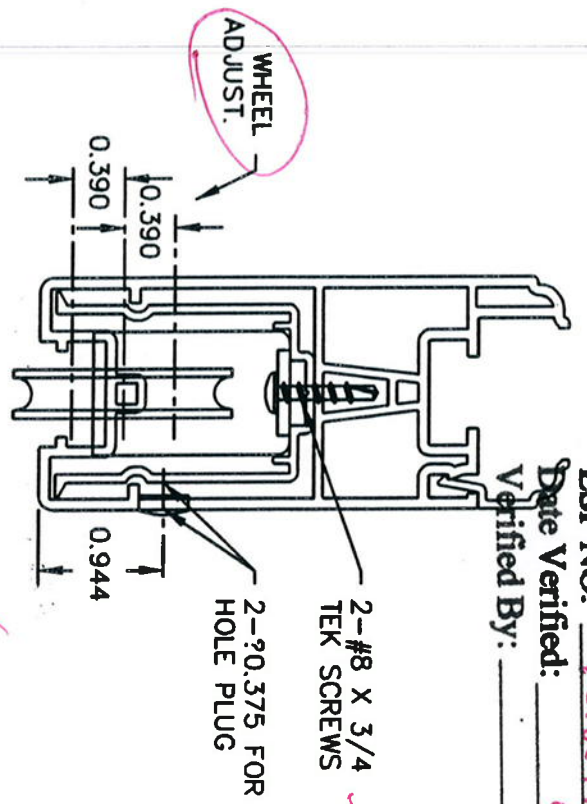
TOLERANCES (EXCEPT AS NOTED)
? .010 [0.25]

DRAWN	M/G	DATE	02/05/03	APPVD		MAT'L	6105-15 6061-T6	SCALE	2/1
SASH REINFORCEMENT XHD A 10300151									

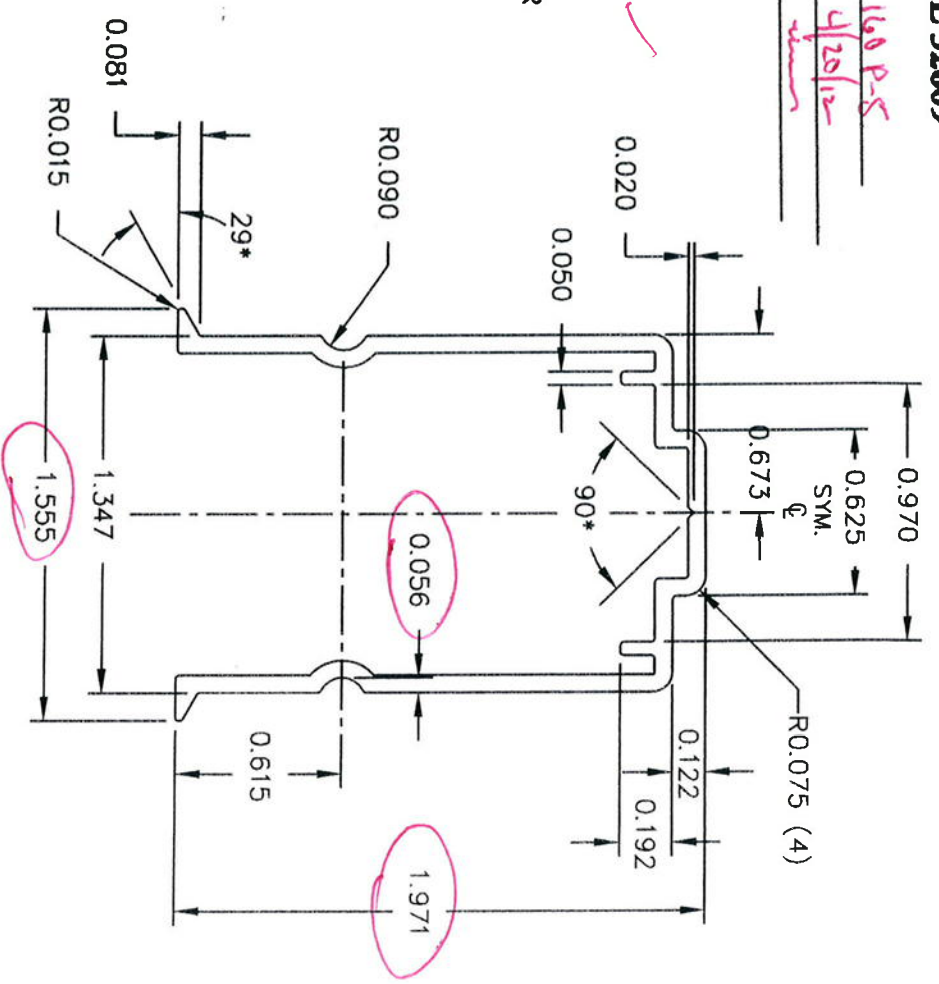
REV	BY	APPVD	DATE	CHANGE
-----	----	-------	------	--------

1924 Premier Row
Orlando, FL 32809

ESP NO. ESP009160 P-S
Date Verified: 4/26/12
Verified By: _____



PARTS ASSEMBLY
SCALE: 1/2



- NOTES:
1. MATERIAL: ALUM. 6005-T5, 6061-T6 or 6105-T5.
 2. UNSPECIFIED WALL THICKNESS = .065".
 3. BREAK ALL CORNERS R0.015.
 4. NO EXPOSED SURFACES.
 5. MOMENTS OF INERTIA: Ixx=.147; Iyy=.118.

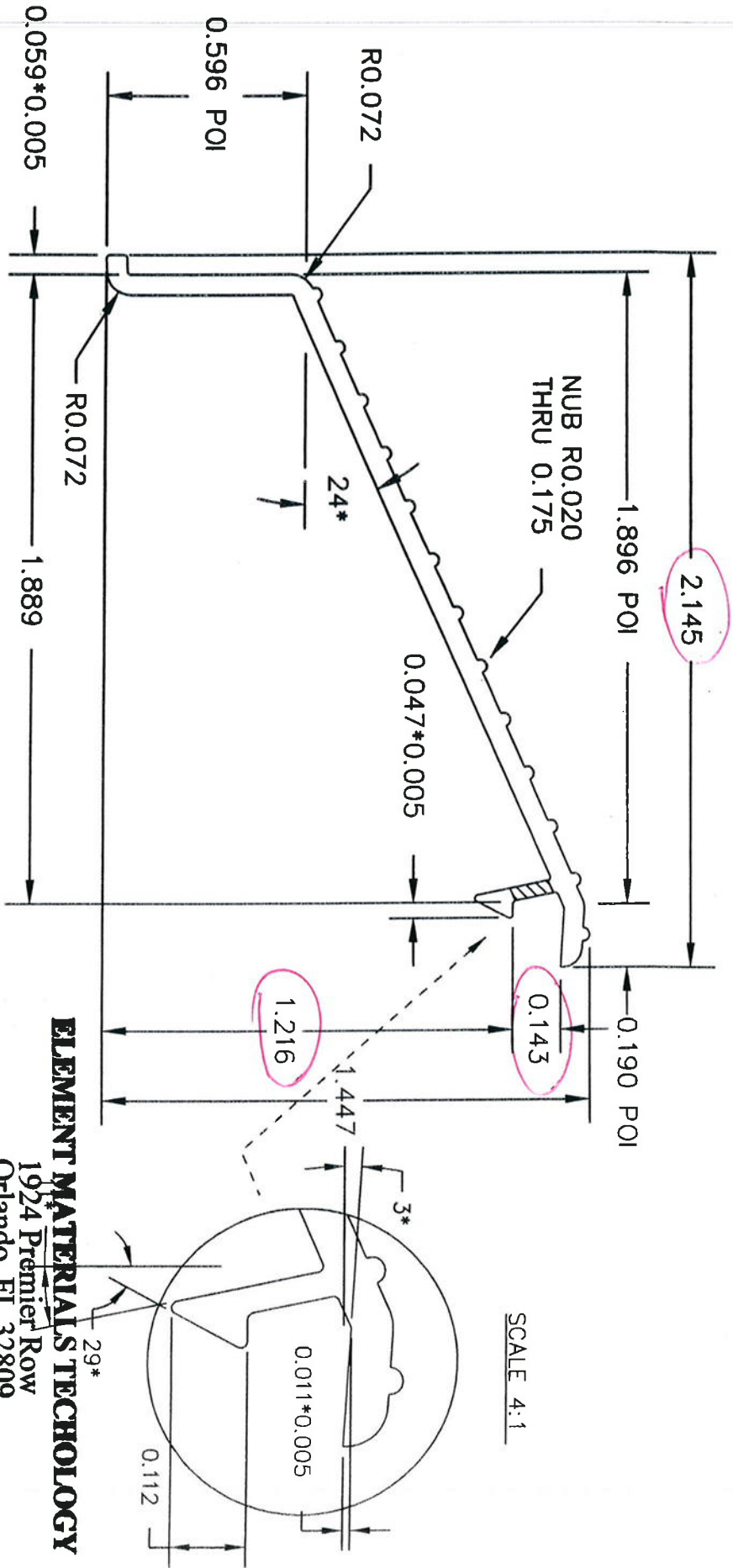
DEPLIS # 10300152



VINYL BUILDING PRODUCTS LLC
AREA = .359 sq. in.
WT/FT = .431 lb.
PERIM. = 11.200 in.
FACTOR = 26
TOLERANCES (EXCEPT AS NOTED)
AA STANDARDS

REV	BY	DATE	DESCRIPTION
-	-	-	-

DRAWN	RJK	DATE	11-30-05	APPV'D	MAT'L NOTE	1	SCALE	FULL
RAIL INSERT-SIDE ADJUST ROLLER 10300152								



EXPOSED SURFACE
ACTUAL SIZE

ESP NO. ESR009160P-5
Date Verified: 1/24/12
Verified By: [Signature]

ELEMENT MATERIALS TECHNOLOGY
1924 Premier Row
Orlando, FL 32809

- NOTES:
1. ALL UNSPECIFIED RADI ARE 0.010.
 2. WALL THICKNESS.
 3. PAINT WITH ALCOA, PPG COLOR UC73603, POLYCRON WHITE.

0.062  0.040



PAINT WITH ALCOA, PPG COLOR UC73603, POLYCRON WHITE.

AREA = 0.195
WEIGHT = 0.229 lb/ft
TOLERANCES (EXCEPT AS NOTED)
0.010 [0.25]



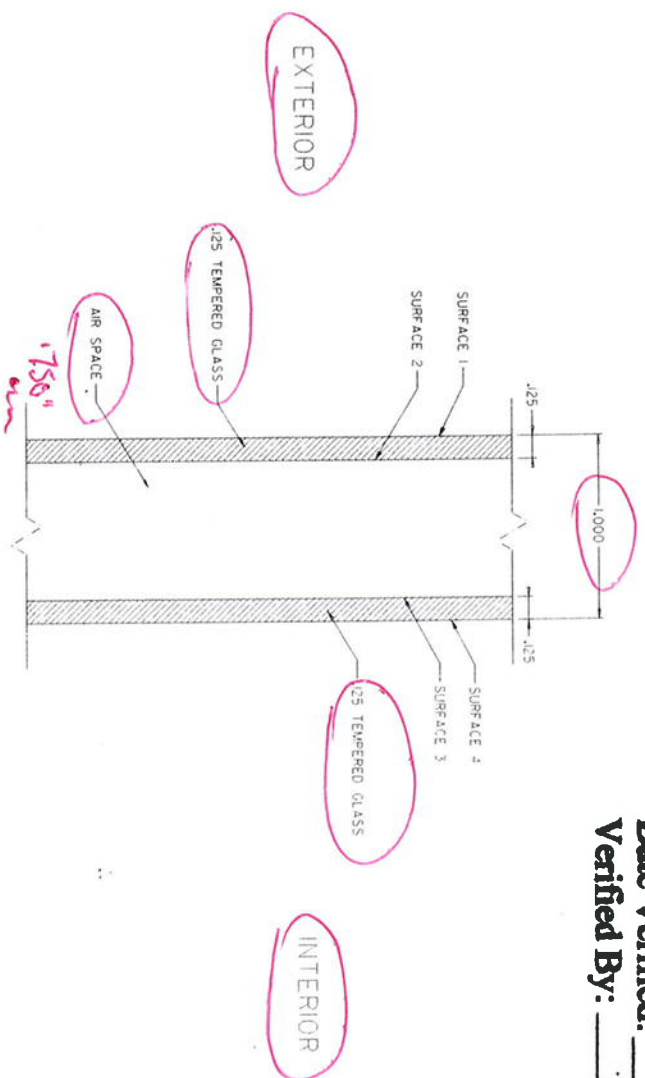
VINYL BUILDING PRODUCTS INC.

A	MB	2/13/03	ADDED NOTE 3.
REV	BY	APPRVD	DATE
			CHANGE

DRAWN	MG	DATE	12/26/00	APPRVD		MAT'L	6061-T6 6105-T5	SCALE	2/1
SILL COVER. SLIDER									
A 10300171									

ELEMENT MATERIALS TECHNOLOGY
 1924 Premier Row
 Orlando, FL 32809

ESP NO. ESP009160P-S
 Date Verified: 4/26/12
 Verified By: Www



ELEMENT MATERIALS TECHNOLOGY
 1924 Premier Row
 Orlando, FL 32809

ESP NO. ESP009160P-S & P-6
 Date Verified: 4/26/12
 Verified By: Www

1" OVERALL LAMINATE IG
 1/8" TEMPERED PANELS

CONFIDENTIAL		UNLESS OTHERWISE SPECIFIED DIMENSIONS IN INCHES 2 PLACES DECIMALS 3 PLACES THOUSANDTHS 4 PLACES TEN THOUSANDTHS 4500 1/8" = 19.054		REVISIONS		 NORTH AMERICA	
UNPUBLISHED WORK © 2008 DECEUNINCK NORTH AMERICA		THIS DOCUMENT CONTAINS PROPRIETARY AND CONFIDENTIAL INFORMATION. DO NOT DISCLOSE OR REPRODUCE WITHOUT THE WRITTEN CONSENT OF DECEUNINCK NORTH AMERICA. ANY UNAUTHORIZED DISCLOSURE OR REPRODUCTION IS SUBJECT TO LEGAL ACTION AND ANY ASSOCIATED DOCUMENTS.		DATE: 06.01.09		PROJECT: 1" IG - 0.175" PANELS	
		DRAWN BY: JON		DATE: 06.01.09		SCALE: 1/8" = 1"	
		CHECKED BY: JON		DATE: 06.01.09		SHEET: 1 OF 1	